

TECHNICAL SPECIFICATION :

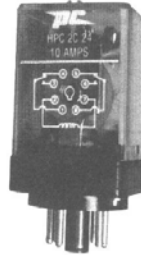
| | |
|------------------------------------|----------------------------------|
| Contact Rating At 24 VDC/250VAC | Typical Life Expectancy |
| 10Amps Resistive | 2 x 10 ⁶ operations |
| 12 Amps Resistive | 1.5 x 10 ⁶ operations |

| | |
|----------------------------|--|
| Contact Material | Silver Alloy |
| Initial Contact Resistance | 0.050 Ohms (max.) |
| Ambient Temp. | -40°C to + 70°C |
| Di-electric Strength | 2KV between contacts or coil to ground |
| Insulation Resistance | 100 Meg. Ohms min at 500 VDC at 27°C & 65 % R.H. |
| Operate Time | 0.025 sec at nominal Voltage |
| Release Time | 0.015 sec at nominal Voltage |
| Max. Weight | HCC 80 gms. HPC 90 gms. |

TYPE HCC
ENCLOSED VERSION
SOLDER CONNECTION



TYPE HPC
ENCLOSED VERSION
PLUG-IN-CONNECTION



SALIENT FEATURES

- 10 Amps/12Amps
- Versatile Relays satisfying low to medium Power Sources
- High Reliability
- Elegant, Sturdy and Light Weight

APPLICATIONS:-

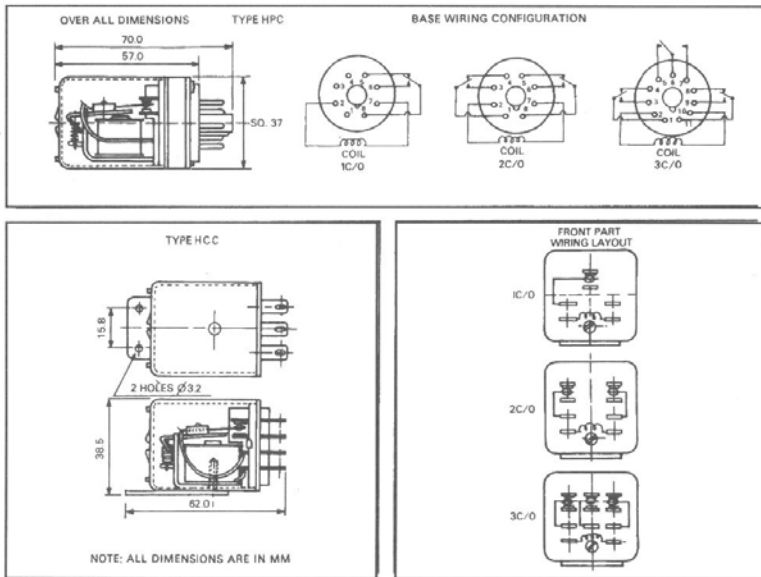
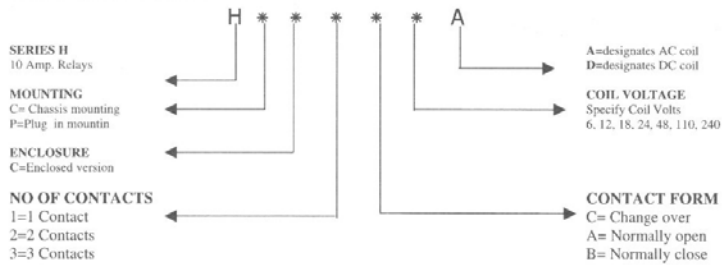
- Voltage Stabilizer
- Uninterrupted Power Supply
- Process Control System
- Control Panels
- Inverters
- Industrial Controls

COIL-DATA

(All Values at 27°C±2°C Ambient)

| Nominal Voltage | Resistance in Ohms ± 10% | | Must Operate Voltage |
|-----------------|--------------------------|-----------|----------------------|
| | DC relays | AC relays | |
| 6 | 30 | 4 | 5 |
| 12 | 120 | 16 | 10 |
| 18 | 270 | - | 15 |
| 24 | 480 | 70 | 20 |
| 48 | 1900 | - | 40 |
| 110 | 10k | 2k | 90 |
| 240 | - | 10k | 190 |

ORDERING CODE



MADHU SUBTRONIC COMPONENTS PVT.LTD

Off : 1 st Floor, Krishna Bldg, Shamrao Vithal Lane,
Off. Lamington Rd, Mumbai – 400 007
Tel : - 91 2380 0783 / 2386 4484 / 2387 6707, Fax : - 91 22 2387 6729
email : - mscpl@vsnl.com Website : - www.mscpl.com