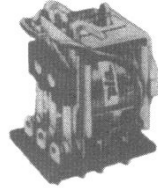


TECHNICAL SPECIFICATION :

Contact Rating At 24 VDC/250VAC	Typical Life Expectancy
6Amps Resistive	10 ⁶ operations
10 Amps Resistive	10 ⁷ operations
* Also Available 5 Amps Version	

Contact Material	Alloy Silver
Initial Contact Resistance	0.050 Ohms (max.)
Ambient Temperature	-25°C to +55°C
Di-electric Strength	2 KV between contacts or coil to ground
Insulation Resistant	100 Meg-Ohms min at 500 VDC AT 25°C & 65% RH
Operate Time	0.020 sec.max. at nominal Voltage
Release Time	0.010 sec.max. at nominal Voltage
Max. Weight	MCO 60 gms. MCC 80 GMS. MPC 90 gms.

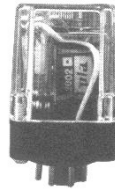
COIL-DATA (All Values at 27°C±2°C Ambient, cold start)			
Nominal Voltage	Resistance in Ohms±10%		Must Operate Voltage
	DC Relays	AC Relay	
6	30	7	5
12	200	30	10
18	390	-	15
24	500	110	20
48	2250	440	40
110	10000	2400	90
240	110 DC Relays with 10 k/2 resistor	9500	180



TYPE MCO
OPEN VERSION
SOLDER CONNECTION



TYPE MCC
ENCLOSED VERSION
SOLDER CONNECTION



TYPE MPC
ENCLOSED VERSION
PLUG-IN-CONNECTION

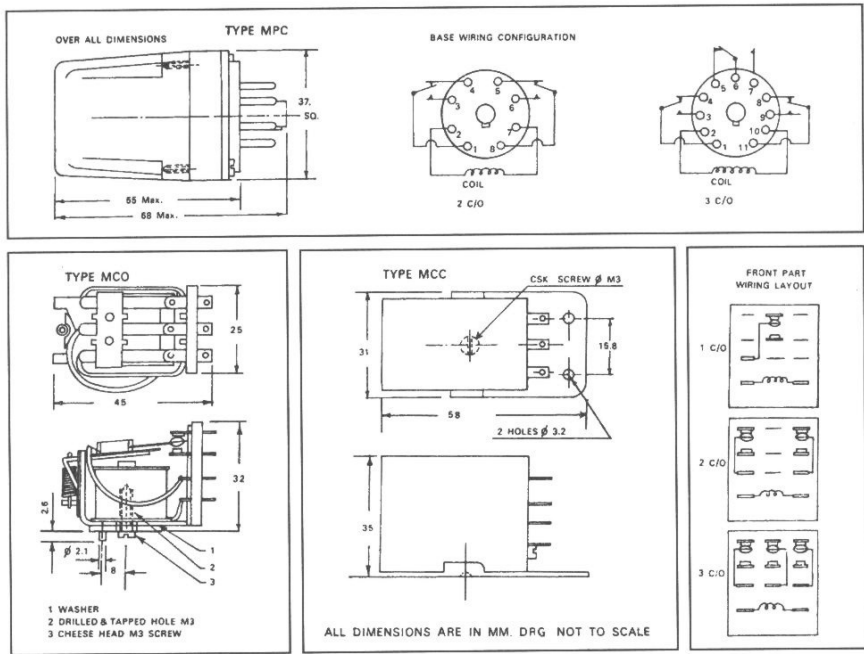
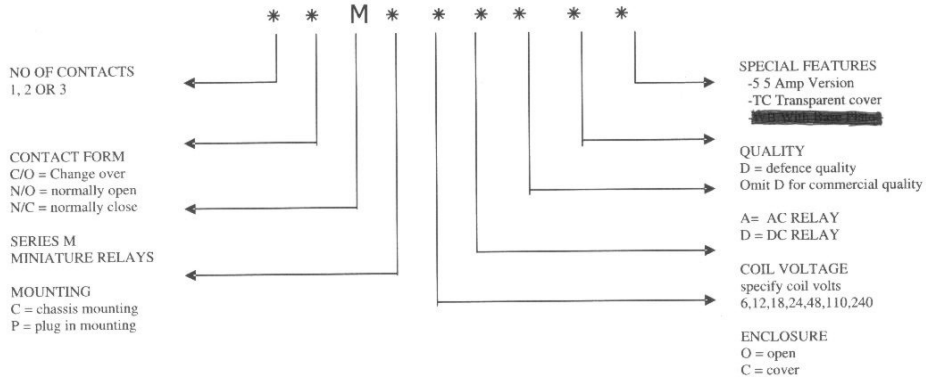
SALIENT FEATURES

- LCSO Approved Version Available
- High Reliability
- Low Cost
- Assured Deliveries

APPLICATIONS:-

- Machine Tools
- Control Panels
- Instrumentation
- Stabilizers
- Textile Machineries
- Industrial & Consumer Electronics
- Electrical Equipments & Appliances
- Automation & Remote Control Systems
- Bio- medical Instruments & Appliances

ORDERING CODE



MADHU SUBTRONIC COMPONENTS PVT.LTD

Off : 1 st Floor, Krishna Bldg, Shamrao Vithal Lane,
Off. Lamington Rd, Mumbai – 400 007
Tel : - 91 2380 0783 / 2386 4484 / 2387 6707, Fax : - 91 22 2387 6729
email : - mscpl@vsnl.com Website : - www.mscpl.com